

The circuit breaker solar container mechanical indicator light flashes

Warranty
10 years

LiFePO₄

Intelligent BMS

Wide Temp:
-20°C to 55°C





The circuit breaker solar container mechanical indicator light flashe



Understanding Why the Light is Flashing On Your Garage Door ...

In conclusion, a flashing light on your garage door openers can indicate various issues, including sensor misalignment, power interruptions, or remote control signal problems. By following ...

What does the blinking yellow light mean on my circuit breaker?

Very fancy stuff. I looked up the troubleshooting guide for Siemens CAFCI type breakers. It turns out that the blinking LED basically stores the "last trip" problem. If the breaker tripped ...

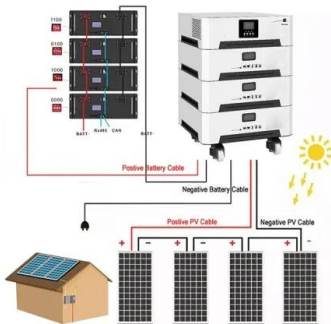


What Is a Circuit? The Physics Behind Electronics

At its core, a circuit is a closed loop through which electric current can flow. This current--the flow of electric charge--needs a complete path to move. Imagine water flowing through ...

What are the Green, Yellow and Red LED indicators on the Micrologic

Issue: Purpose of the green (ready), orange (>95) and red (>105) indicators on H, J and L breaker trip units Product Line: Circuit Breaker Resolution: GREEN LED When the green LED is ...



Circuits - 25+ Examples, Types, Rules, Differences

Circuits are interconnected pathways that allow the flow of electric current, typically consisting of components like resistors, capacitors, inductors, and transistors. These elements are ...

Cricut® Make It Yours Sales Event , Lowest Prices of the Year

Let your Cricut machine work its magic, cutting every piece of your project with intricacy & precision. 4. Put it all together. Assemble the pieces or apply your design to almost anything.



Need help with breaker indicator light. What does this ...

Just turn off the circuit breaker. And get familiar what is not working. Anything within that circuit is suspicious especially what was installed/altered last. It can be the ...



How to read?EATON Circuit Breaker AFCI/GFCI RED light fault

How to read EATON circuit breaker AFCI/GFCI RED LIGHT trouble shooting fault codes for diagnostics to find circuit fault, appliance fault, or bad GFI breaker . Works for me God bless (red



Electric circuit , Diagrams & Examples , Britannica

Electric circuits are classified in several ways. A direct-current circuit carries current that flows only in one direction. An alternating-current circuit carries current that pulsates back and forth ...

What is a Circuit?

One of the first things you'll encounter when learning about electronics is the concept of a circuit. This tutorial will explain what a circuit is, as well as discuss voltage in further detail. A simple circuit, ...



Electronic circuit

An electronic circuit is composed of individual electronic components, such as resistors, transistors, capacitors, inductors and diodes, connected by conductive wires or traces through which electric ...





How To Fix A Circuit Breaker That Is Red When Turned On

Circuit breakers are made in several different ways. Some breakers are designed so that when they trip there is a red or orange flag that pops into a window to show that it has tripped. ...



Is Your Motion Sensor Light Blinking Red? (We Have a Fix!)

A blinking red indicator light on a motion-sensing light fixture usually means that the light needs resetting. You can reset the light by turning off the power to the light fixture on many ...

What Does a Red Line Mean on a Circuit Breaker?

A red line or a red light on a circuit breaker typically indicates that the breaker has tripped due to a fault or overload. Some breakers have an indicator window that shows red when the breaker ...



What to do if the solar green light keeps flashing , NenPower

1. UNDERSTANDING THE FUNCTION OF SOLAR LIGHTS Solar lights operate on the principle of harnessing sunlight through photovoltaic cells, converting it into electrical energy stored ...



How to troubleshoot an AF or AFGF breaker with a blinking LED

What is the size of the screwdriver required for the QO and Homeline circuit breaker wire binding screw? Video: How do you wire a QO/QOB shunt trip breaker (ex. QO120-1021)? What is the ...



What does blinking LEDs mean for GE DFCI AFCI/GFCI Breaker

When I press the test button both LEDs blink continuously (blinking does not stop) and the breaker does not trip. The manual does not mention anything anything about continuous blinking ...

Need help with breaker indicator light. What does this mean?

Just turn off the circuit breaker. And get familiar what is not working. Anything within that circuit is suspicious especially what was installed/alterd last. It can be the smallest thing. Unplug ...



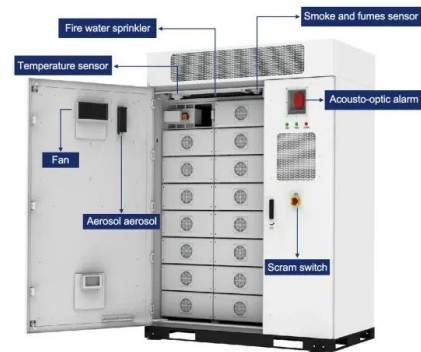
Uncovering the Mystery: Why is My Breaker Flashing?

Have you ever noticed your circuit breaker blinking or flashing lights? This puzzling situation can be concerning. Understanding what a flashing breaker means is essential for keeping your home safe ...



Troubleshooting guide for Ground Fault, Arc Fault and Dual

Turn the circuit breaker off Turn back on the circuit breaker What is the breaker's LED indication? Solid red: parallel arcing Blinking red: series arcing Flashing red and yellow: replacement Solid yellow: ...



Contact Us

For catalog requests, pricing, or partnerships, please visit:
<https://crossworldtours.co.za>