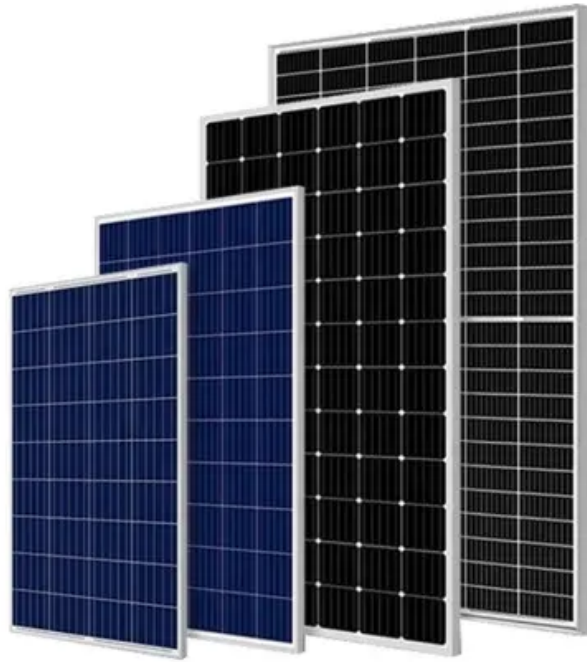


# **Obtain solar container device to start forward investigation**





## Overview

---

This is done by placing the mobile device in airplane mode or placing it in a Faraday container. A Faraday container can be either a bag or a box that is used to block external static and non-static electric fields by channeling electricity along and around, but not through, the container. Nothing in it is intended to create any substantive or procedural rights, privileges, or benefits enforceable in any administrative, civil, or criminal matter by any prospective or actual witnesses or parties. See *United States v. Caceres*, 440 U.S. 741 (1979).

Chapter 1. Searching and Seizing. These “Guidelines for Digital Forensics First Responders” (the “Guidelines”) have been prepared as technical guidelines to provide information and advice on digital forensic approaches that may be adopted when seizing and analysing different kinds of devices. These Guidelines are solely for the use of law enforcement. Law enforcement may seize devices such as smartphones, computers, and tablets during an investigation to gather evidence. This is particularly relevant in cases involving fraudulent activities where digital footprints are often crucial in proving or disproving allegations. The devices may contain information that can be used to effectively support your investigation. This Field Guide was created to help you—the Peace Officer and First Responder—properly collect, preserve, and transport this type of evidence. The FBI’s Operational Technology Division’s Digital Evidence Section, which includes the guidelines, provides this information. This is done by placing the mobile device in airplane mode or placing it in a Faraday container. A Faraday container can be either a bag or a box that is used to block external static and non-static electric fields by channeling electricity along and around, but not through, the container. Unless otherwise noted, all rights are reserved. Mobile device forensics has become essential in modern digital investigations, with smartphones and tablets containing critical evidence for both criminal and corporate cases. This guide explores the fundamentals of mobile forensics, from evidence extraction and analysis to best practice.



## Obtain solar container device to start forward investigation

---



### **A Guide For Law Enforcement**

A Guide for Law Enforcement Revision of this guide was conducted by the National Forensic Science Technology Center (NFSTC), supported under cooperative agreements 2009-D1-BX-K028 and 2010 ...

### **FOIA.gov**

The Freedom of Information Act (FOIA) is a law that gives you the right to access information from the federal government. It is often described as the law that keeps citizens in the know about their ...



### **Rule 26. Duty to Disclose; General Provisions ...**

This is a new subdivision listing all of the discovery devices provided in the discovery rules and establishing the relationship between the general provisions ...



### **ISP List and LE Guides**

The ISP List is a database of Internet service and other online content providers that will help you get the information you need for your case. For each Internet Service Provider listed, you'll ...



## Establishment Search , Occupational Safety and Health Administration

Occupational Safety and Health Administration  
You can now find citation information for violations that Federal OSHA has cited. For violation and citation results: Enter the establishment name in the ...



## LOCKED CONTAINERS

The Supreme Court has expressed a strong preference that law enforcement officers obtain a search warrant before conducting a search of any kind. Searching a locked container is no different.<sup>1</sup> The ...



## What to Expect if Law Enforcement Seizes Your Devices for ...

In the realm of fraud investigations, the seizure of electronic devices by law enforcement is not uncommon. This action can seem intrusive and overwhelming, but understanding the reasons behind ...



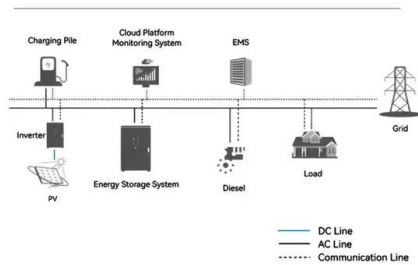


## VEHICLE EXCEPTION TERRY FRISK OF A VEHICLE

Scope. If reasonable suspicion exists to believe that the driver or passenger is dangerous and may gain immediate control of a weapon, a law enforcement officer may "frisk" that person, as well as the entire ...



### System Topology



## Crime Scene Investigation: How It's Done

How It's Done Samples That May be Collected at a Crime Scene A wide variety of physical evidence can be collected at a scene that is deemed valuable ("probative") for collection and investigation: ...

## Searching and Seizing Computers and Obtaining ...

When agents obtain consent to remove computers for of-site review and analysis, the time required for review can be substantial. In such cases, law enforcement should keep in mind that before ...



## Investigation of active interrogation techniques to detect special

Even if a device was not detonated, its known or suspected presence aboard a cargo container ship in a U.S. port would have major economic and political consequences. One possible ...



## Handling Evidence from Specific Sources

This is done by placing the mobile device in airplane mode or placing it in a Faraday container. A faraday container can be either a bag or a box that is used to block external static and non-static ...



## Strengthening Forensic Science in the United States: A Path ...

Strengthening forensic science in the United States : a path forward : summary / Committee on Identifying the Needs of the Forensic Science Community, Committee on Science, Technology, and ...

## How Courts Work

To begin preparing for trial, both sides engage in discovery. This is the formal process of exchanging information between the parties about the witnesses and evidence they present at trial. Discovery ...



## GUIDELINES FOR DIGITAL FORENSICS FIRST ...

This is due to the fact that obtaining or copying the evidence is a slow process that can last for many hours. Therefore, it is crucial to start processing this evidence as soon as possible while continuing ...



## Electronic Crime Scene Investigation: A Guide for First ...

Internally attached computer hard drives, external drives, and other electronic devices at a crime scene may contain information that can be useful as evidence in a criminal investigation or prosecution.



## SANTA BARBARA COUNTY

Collect any bullet, bullet jacket or bullet fragments from the scene and place into separate pillboxes or coin envelopes. Mark the container with the item number, date, and initials of who collected the item ...

## Solar Permitting Guidebook 4th Edition

3 These sections recommend a streamlined local permitting process for small, simple solar PV and solar water heating installations (including both solar domestic water Part heating ...



## Contact Us

For catalog requests, pricing, or partnerships, please visit:  
<https://crossworldtours.co.za>