

Nanyue subway station tram solar container





Nanyue subway station tram solar container

Mobile Solar PV Container , Portable Photovoltaic Power Station



High-efficiency Mobile Solar PV Container with foldable solar panels, advanced lithium battery storage (100-500kWh) and smart energy management. Ideal for remote areas, emergency rescue and ...

How to connect a tram to a solar panel , NenPower

Connecting a tram to a solar panel involves several steps: 1. Assessing power requirements, 2. Choosing suitable solar technology, 3. Integrating the solar syst...



Tram Container Energy Storage: Powering Smart Cities Efficiently

Here's where tram container energy storage shines. These 40-foot units combine lithium-ion batteries, thermal management, and smart grid interfaces in weatherproof packages.

Nanyue subway station tram energy storage

This paper investigates the benefits of using the on-board energy storage devices (OESD) and wayside energy storage devices (WESD) in light rail transportation (metro and tram) systems.



Rome2Rio ...



Solar Metro & Tram station - OET

OET's Organic Photovoltaic (OPV) solutions bring clean energy integration to metro and tram stations, enabling solar-powered operation without compromising design or commuter visibility. Flexible and ...



Beijing Subway DKZ6

About the Site Declarations and Disclaimers
Contacts Interchange stations with different names in Hong Kong Basic facts you need to know when you take trains in China Tag Cloud



Tram container systems , C& I Energy Storage System

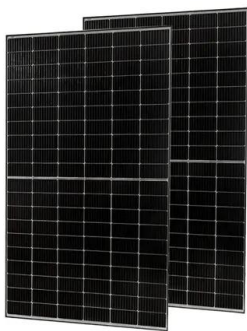
The Article about tram container systems How Tram Container Energy Storage Projects Are Revolutionizing Urban Transit Your city's trams silently gliding through streets, not just moving ...





Transforming public transport depots into profitable energy hubs

Here the authors present a data-driven framework to transform bus depots into grid-friendly profitable energy hubs using solar photovoltaic and energy storage systems.

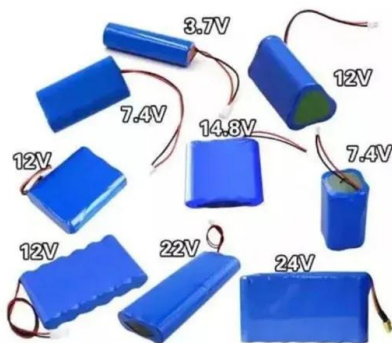
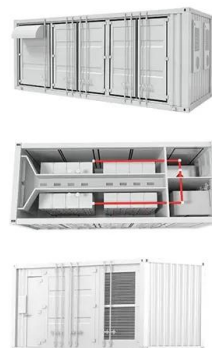


TRAM OLD BATTERY SOLAR CONTAINER PROJECT

With an existing tracking solar mount, we aimed to integrate their existing solar in the new off-grid system, which would be housed in a converted shipping container and also included a new ground

How Tram Container Energy Storage Projects Are Revolutionizing ...

Welcome to the world of tram container energy storage projects, where urban transit meets cutting-edge energy innovation. As cities worldwide grapple with climate targets and aging ...



Tram container energy storage

The maximum installation size is a standard 40 ft container, which can provide MW level power for short-term needs. The SkelGrid energy storage system is designed for demanding applications such as ...



Nanyue station

Nanyue station (Chinese: ; pinyin: Nányue Zhàn) is a station on Line 14 of Shenzhen Metro in Shenzhen, Guangdong, China, which opened on 28 October 2022. [1][2] It is located in Longgang ...



'Subway On Wheels': Pakistan's Lahore Gets 'South ...

Billed as a "subway on wheels", this is Pakistan's first trackless and ticketless solar-powered Metro whose country of origin is China. It is part of ...

Tram solar container power station operation and maintenance ...

This article details the operation and maintenance of a Photovoltaic Power Station, covering safety protocols, inspections, and specific guidelines for maintaining arrays, combiner



Mobile Solar PV Containers Manufacturer , LZY Container

Our solar container products are exported to Europe, North America, Southeast Asia, and other countries. They are widely used by government, transportation, education, telecom operators, and ...



Tram Container Energy Storage: Powering Smart Cities Efficiently

Imagine if tram depots could become microgrid hubs - that's exactly what Singapore's Land Transport Authority is testing. Their prototype containers not only power trams but also nearby EV charging ...



80kWh Havana Off-Grid Solar Container Used in Subway Stations

80kWh Havana Off-Grid Solar Container Used in Subway Stations Are solar energy containers a beacon of off-grid power excellence? Among the innovative solutions paving the way forward, solar energy ...

Solar Metro & Tram station - OET

OET's Organic Photovoltaic (OPV) solutions bring clean energy integration to metro and tram stations, enabling solar-powered operation without compromising design or commuter visibility.



Contact Us

For catalog requests, pricing, or partnerships, please visit:
<https://crossworldtours.co.za>