


Fire protection distance between solar container and building



**CONTAINER
TYPE ENERGY
STORAGE SYSTEM**

Energy storage system

FC RoHS CE 



Overview

Most jurisdictions mandate specific minimum distances: typically 3 feet from roof ridges, 18 inches from hip or valley lines, and designated pathways for firefighter access. Installing solar panels requires careful attention to setback requirements - the critical spacing needed between panels and roof edges, vents, and other structures for optimal fire safety for solar installations. While these requirements may seem like minor technical details, they play a vital role. The installation of a solar energy system in California requires strict adherence to fire safety regulations, which mandate specific spatial separations known as fire setbacks. These requirements are codified in the California Fire Code (CFC), which adopts and modifies standards from the National. There are essentially three types of pathways that are required. The first type ensures firefighters will be able to get on the roof and are often called perimeter pathways. The second type of pathway ensures that firefighters can move around the roof once they have gained access. These are. This Requirement regulates the installation of solar photovoltaic systems and their ancillary devices. Included are requirements regulating access, fire protection, and other measures and general precautions relating to solar photovoltaic systems. SEC. 3. DEFINITIONS. The following words and. Included are requirements regulating access, fire protection, and other measures and general precautions relating to solar photovoltaic systems. Exception: Detached, non-habitable Group U structures including, but not limited to, parking shade structures, private garages, carports, solar trellises. PV arrays shall not have dimensions in either axis greater than 150 feet. Residential buildings with hip, ridge/valley roof features shall provide a 3-foot access pathway away from applicable eave to hip/ridge/valley features. To provide adequate smoke ventilation, PV arrays shall not be located.



Fire protection distance between solar container and building



Fire Separation Distance - BOAT

Depending on the fire separation distance, degree of opening protection, and percentage of openings, the distance required between buildings on the same lot can vary anywhere from 0 feet ...

Fire Safety Guideline for Building Applied Photovoltaic Systems ...

Summary Installing a PV system on the roof of a building introduces new fire risks to the building or damages to the system. First, the PV installations have been shown to increase the chances for ...



SOLAR PHOTOVOLTAIC INSTALLATION GUIDELINE

The California Department of Forestry and Fire Protection - Office of the State Fire Marshal (CAL FIRE-OSFM), local Fire Departments (FD), and the solar photovoltaic industry have ...

Fire protection distance of energy storage containers

What are the fire and building codes for energy storage systems? However, many designers and installers, especially those new to energy storage systems, are unfamiliar with the fire and building



...



Solar Power Uses and Placement Requirements

Diagram 10: Travel distance for access pathway exceeding 25 feet shall require a second access pathway. Access pathways shall have a maximum 150 feet travel distance.



Residential Solar Panel Requirements

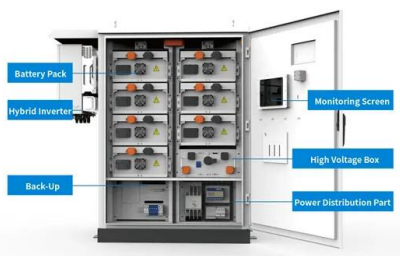
Solar panels (photovoltaic arrays) must also be set back from the ridge line to allow for fire service roof ventilation at the peak of the roof. The amount of setback depends on how much of

...



Providing Access to Roofs with a PV System , NFPA

For any building with a length or width greater than 250 ft (76.2 m), a minimum 6 ft (1829 mm) pathway is required on all sides. If both the length and width are 250 ft (76.2 m) or less, then the ...





Edge Protection for Solar: Fall Protection Guide

Win/Win for Solar Installation Fall Protection Fall protection is needed both during installation and after installation. Often, contractors will provide their own fall ...



Fire protection distance between energy storage container and ...

What are the fire and building codes for energy storage systems? However, many designers and installers, especially those new to energy storage systems, are unfamiliar with the fire and building ...

CHAPTER 12 ENERGY SYSTEMS

Fuel lines supplying a generator set inside a high-rise building shall be separated from areas of the building other than the room the generator is located in by an approved method, or an assembly that ...

TAX FREE

Product Model
HJ-ESS-215A(100KW/215KWh)
HJ-ESS-115A(50KW 115KWh)

Dimensions
1600*1280*2200mm
1600*1200*2000mm

Rated Battery Capacity
215KWH/115KWH

Battery Cooling Method
Air Cooled/Liquid Cooled



Solar Panel Fire Safety: Why Setbacks Matter for Your ...

Remember to verify your installer's credentials, including licenses, certifications, and insurance coverage. Ask about their experience with local fire ...



Safety distances between waste containers and buildings

In outside areas, the heat of a fire is transferred from combustible objects primarily through the last two methods mentioned above. That is why from the fire technical point of view, it is vital that the ...



OCFM Photovoltaic Guideline Final

This guideline establishes the minimum standard for the layout design, marking, and installation of solar photovoltaic systems and is intended to mitigate the fire safety issues.

California Fire Code Solar Access Requirements

To provide adequate smoke ventilation, PV arrays shall not be located higher than 3 feet below the ridge. Builders shall refer directly to the relevant sections of Title 24 (most currently Part 2.5 Section ...



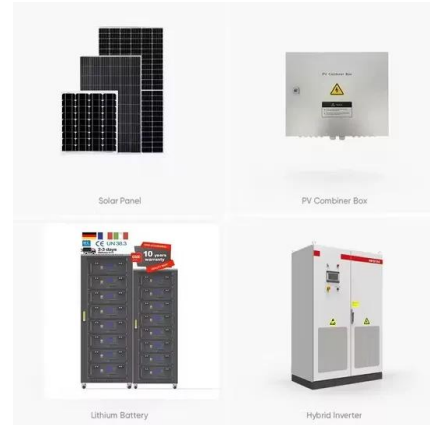
Residential Solar Panel Requirements

For more information about fire safety in photovoltaic systems, check out the newest edition of the Fire Protection Handbook, which includes an entire chapter on photovoltaic systems.



CHAPTER 12 ENERGY SYSTEMS

The 2021 IFC® contains regulations to safeguard life and property from fires and explosion hazards. Topics include general precautions, emergency planning and preparedness, fire department access ...



Contact Us

For catalog requests, pricing, or partnerships, please visit:
<https://crossworldtours.co.za>