

# **Battery solar container material cobalt**





## Battery solar container material cobalt



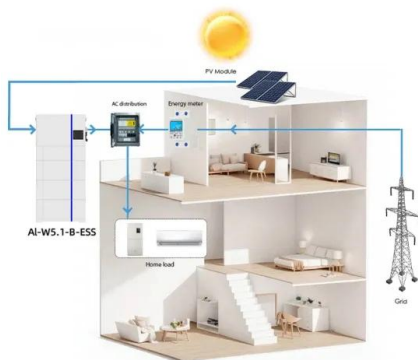
### Household Battery Recycling

Household battery recycling locations Lead-acid batteries, or "automotive type batteries," are banned from disposal. Consumers may bring lead-acid batteries to any Wisconsin retailer that sells these ...

### Replacement battery

Hiya, I have an early 2014 D2 cross country automatic. It keeps complaining about battery level, even after our (rare but very long drives). So I think the battery is shot. Funnily, when I put my ...

### 12.8V 100Ah

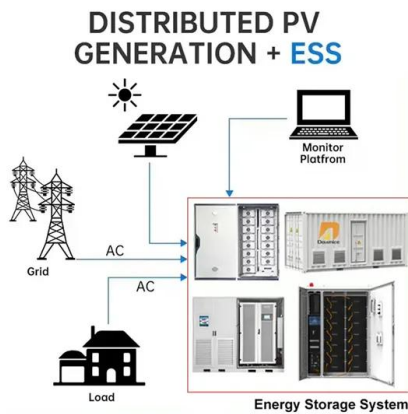


### Start/Stop requires service , Volvo V40 Forums

Try charging the battery. 12.3 volts is a little low. Do you regularly travel short distances or use the infotainment system whilst the engine isn't running? If possible, use a microprocessor ...

### Which battery? D3 start/stop

I'm having a few issues with my v40 which include the air con only blowing cold out one side and warped disks, the immobiliser cut in at 50mph once (but I think that was key battery ...

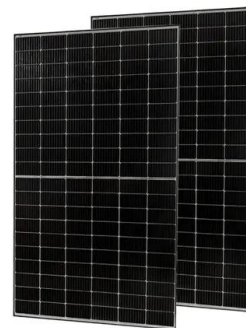


### Battery issues

I've had both batteries replaced (with the correct models), done a 100 mile trip, overnight smart battery charge, charging voltage is fine, system messages cleared but I am still getting "low ...

### U012D87 DTC any ideas? , Volvo V40 Forums

The battery voltage was still 11.9V. I started the engine again while measuring, and this time the voltage briefly rose to 13.4V, as if the battery was charging. But after about 30 seconds, it ...



### New Battery

So I think the time has come to replace the main battery. Its the original Volvo 70ah EFB battery that was on the car from new in 2016.. The car starts fine but I keep getting the "Low Battery ...



## Battery replacement question. , Volvo V40 Forums

The main battery is the one to look at. The secondary battery is only connected to the car by a relay for a fraction of a second during an engine restart from a stop/start event, when it ...



## Low Battery warning , Volvo V40 Forums

Battery is easy to do yourself if you're at all handy around a screw driver and a spanner, just remember to reset the battery management system before you start using the car or it'll kill the ...

## Contact Us

---

For catalog requests, pricing, or partnerships, please visit:  
<https://crossworldtours.co.za>