

Approximate cost of solar container phase change wax in the marshall islands





Approximate cost of solar container phase change wax in the marsh



When should we write \$approx\$ (approximately symbol)?

Perhaps the correct option (and the one I am currently using) is \$ (3)\$ because of the transitivity of the symbols of equality \$=\$ and approximately \$approx\$.

What exactly is "approximation"?

One can, for example, approximate continuous functions with polynomial functions, in which case the idea is to keep the area between the original function and the approximating function small. One can ...



What is the approximate identity?

An approximate identity (in the sense that you've described) is a sequence of operators, usually derived from some "nice" class, that converge to the identity operator in the sense that you ...

How to approximate \$sin x\$ without using trigonometry tables?

An Opening Note : First of all, I want to make this very clear that by the phrase "without using trigonometry tables", I mean without using them to find \$sin\$ values of the "non-standard angles"



(

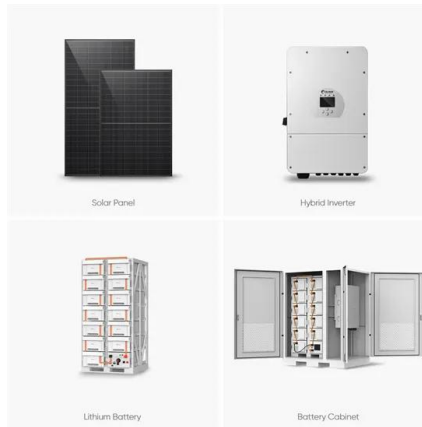


Difference between "≈", "≈", and "≈"

In mathematical notation, what are the usage differences between the various approximately-equal signs "≈", "≈", and "≈"? The Unicode standard lists all of them inside the Mathematical Operators B

Is there a "greater than about" symbol?

To indicate approximate equality, one can use \approx , \sim , \cong , or \doteq . I need to indicate an approximate inequality. Specifically, I know A is greater than a quantity of approximately B. Is there a ...



Contact Us

For catalog requests, pricing, or partnerships, please visit:
<https://crossworldtours.co.za>