

# **Absorbs light during the day and stores energy to emit light at night**





## Overview

---

Chlorophyll absorbs light most efficiently in the blue and red parts of the spectrum and reflects green—hence the familiar color of leaves and grass. This pigment acts as the primary light-absorbing agent, initiating the entire photosynthetic process. Another definition of breathing is the process of moving air into and out of an organism's lungs; defined this way, plants obviously don't breathe. All plants do, however, respire. In everyday life, the words breathing and respiration are often used interchangeably. Scientists offer a more specific. Photosynthesis is the process by which plants use energy from the sun to make food. They use carbon dioxide from the air and water from the soil to make sugar and oxygen. Most plants release oxygen only during the day, when the sun can power photosynthesis. The exceptions to this general rule are. In photosynthesis, the reactions of light energy is captured and used in production of ATP and NADPH. In plants this involves the action of two linked photosystems. In photosynthesis, the reactions of light energy is captured and used in production of ATP and NADPH. In plants this involves the. There is a claim that it generates oxygen from carbon dioxide during the night. This seems surprising to me: that process requires energy; plants generate  $O_2$  from  $CO_2$  through photosynthesis which requires light. As there is no photosynthesis at night, there should be no  $CO_2$  absorption. Am I missing. Autotrophs can capture light energy from the sun, converting it into chemical energy used to build food molecules. (credit: modification of work by Gerry Atwell, U.S. Fish and Wildlife Service) Visit this site and click through the animation to view the process of photosynthesis within a leaf. What. Photosynthesis is the process by which plants use sunlight, water, and carbon dioxide to create oxygen and energy in the form of sugar. The plant leaves are green because that color is the part of sunlight reflected by a pigment in the leaves called chlorophyll. Most life on Earth depends on.



## Absorbs light during the day and stores energy to emit light at night

---



### What is Photosynthesis and Why is it Important?

In the light-dependent reactions, chlorophyll absorbs sunlight and uses it to split water molecules into oxygen, protons, and electrons. This process generates ATP (adenosine ...

### The Light-Dependent Reactions of Photosynthesis

Light energy initiates the process of photosynthesis when pigments absorb specific wavelengths of visible light. Organic pigments, whether in the human retina or ...



Sample Order  
UL/KC/CB/UN38.3/UL



### The Light-Dependent Reactions of Photosynthesis , Biology I

In the light-dependent reactions, energy absorbed by sunlight is stored by two types of energy-carrier molecules: ATP and NADPH. The energy that these molecules carry is stored in a bond that holds a ...

### Solar cell material that can absorb light during the day ...

When looking for the best materials with which to construct a solar cell, the obvious preference would be for one that absorbs light, not emits it. But ...



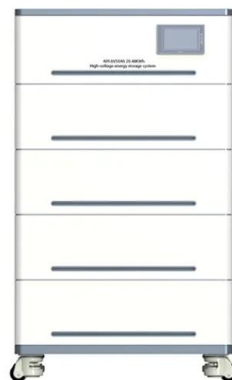
### Cooling Spacecraft: Innovative Thermal Management Techniques For ...

Unlike on Earth, where heat can dissipate into the surrounding air, spacecraft rely on specialized systems to manage thermal energy. These systems often include radiators that emit ...



### Do Plants Emit Oxygen and Carbon Dioxide at Night?

During photosynthesis, plants absorb light and use it to transform water, carbon dioxide, and minerals into oxygen and energy-rich organic compounds that power the plant cells.



### Solar Lanterns Outdoor, 2 Upgraded Bright Solar Lights Outdoor ...

The solar lights for outside emit a warm light, creating a cozy and inviting atmosphere at night ?Outdoor Decor & ? Solar lanterns outdoor provide decorative lighting for porch, fence, balcony, garden, ...





## Do Plants Emit Oxygen and Carbon Dioxide at Night?

Photosynthesis is the process by which plants convert light energy into chemical energy, providing the necessary fuel for growth. During photosynthesis, plants ...



## Photosynthesis, Chloroplast , Learn Science at Scitable

Chlorophyll, the primary pigment used in photosynthesis, reflects green light and absorbs red and blue light most strongly. In plants, photosynthesis takes place ...

## Phosphorescence

After an electron absorbs a photon of high energy, it may undergo vibrational relaxations and intersystem crossing to another spin state. Again the system relaxes vibrationally in the new spin ...



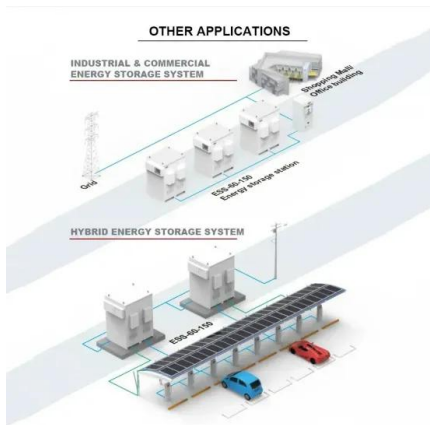
## Effective Cooling Strategies For Your Concrete Home In Hot Climates

By exposing these surfaces at night, you can harness their thermal mass--a property that allows them to absorb and store heat energy. This simple act transforms your floors into a natural ...



## The Light-Dependent Reactions of Photosynthesis

The pigments of the first part of photosynthesis, the light-dependent reactions, absorb energy from sunlight. A photon strikes the antenna pigments of photosystem II to initiate photosynthesis.

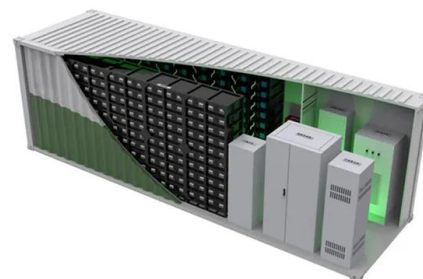


## Chapter 12. Photosynthesis - Introduction to Molecular and Cell Biology

Photosynthesis is essential to all life on earth. It is the only biological process that can capture energy that originates in outer space (sunlight) and convert it into chemical compounds (carbohydrates) that ...

## Bell & Howell 44-Lumen Solar-Powered Bionic Color ...

Bell + Howell Color Burst solar spotlight does not require batteries or electricity to operate. It has built-in industrial quality solar panels that absorb the sun's rays ...



## Sources of Visible Light

When a fire burns, chemical energy is released in the form of heat and light. The burning fuel, whether it is grass, wood, oil, or some other combustible material, emits gases that are heated by the ...



## Does *Dracaena trifasciata* really absorb carbon dioxide at night?

*Dracaena trifasciata* -- previously known as *Sansevieria trifasciata* -- is a common house plant (Mother-in-law's Tongue) of West African origin. There is a claim that it generates oxygen from carbon ...



## Photosynthesis Flashcards , Quizlet

a group of proteins, chlorophyll, and other pigments that are used in the light- dependent reactions of photosynthesis to absorb light energy and convert it into chemical energy

## Contact Us

---

For catalog requests, pricing, or partnerships, please visit:  
<https://crossworldtours.co.za>